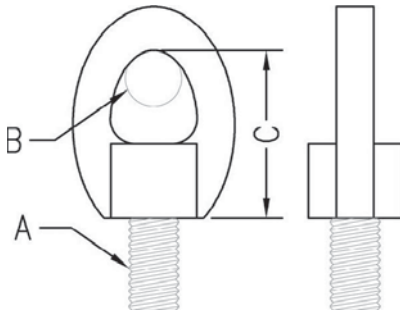


# THREADED ACCESSORIES

**FIG. 30**

## EYE SOCKET



**Function:** Designed for attaching hanger rod to various types of hanger attachments.

**Material:** Malleable iron

**Finish:** Plain or electro-galvanized

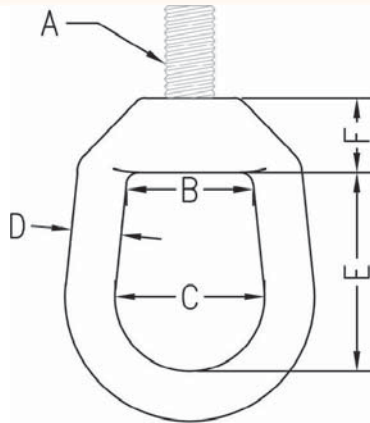
**Approvals:** Complies with Federal Specifications A-A-1192A (Type 16) and Manufacturers' Standardization Society ANSI/MSS SP-58 (Type 16) which supersedes ANSI/MSS SP-69.

**Ordering:** Specify figure number, rod size, and finish.

Rod Size A	For Pipe Sizes		Max. Bolt Size B		C		Max. Rec. Load		Wt. Each	
							lbs.	kN	lbs.	kg
1/4	3/8	(10)	1/4	(6.35)	1 3/8	(34.93)	240	(1.07)	.08	(.04)
3/8	1/2 to 2	(15 to 50)	1/4	(6.35)	1 3/8	(34.93)	610	(2.71)	.08	(.04)
1/2	2 1/2 to 3 1/2	(65 to 90)	1/4	(6.35)	1 9/16	(39.69)	1000	(4.45)	.11	(.05)
5/8	4 & 5	(100 & 125)	3/8	(9.53)	1 3/4	(44.45)	1400	(6.23)	.22	(.10)
3/4	6 & 8	(150 & 200)	1/2	(12.7)	2 1/4	(57.15)	2200	(9.79)	.30	(.14)
7/8	10 & 12	(250 & 300)	1/2	(12.7)	2 7/16	(61.91)	2300	(10.23)	.32	(.15)

**FIG. 35 & 35L**

## WELDLESS EYE NUT



**Function:** Designed for use in high strength and high temperature piping applications. Fig. 35L is designed to be used in conjunction with Fig. 960 forged steel turnbuckle, in applications where a vertical adjustment may be necessary.

**Material:** Forged steel (Type 316 Stainless Steel upon request)

**Finish:** Plain or electro-galvanized (Hot dipped galvanized upon request)

**Approvals:** Complies with Federal Specifications A-A-1192A (Type 17) and Manufacturers' Standardization Society ANSI/MSS SP-58 (Type 17) which supersedes ANSI/MSS SP-69.

**Ordering:** Specify figure number, rod size, material, and finish.

*NOTE: Supports loads equal to the full limitation of the hanger rod.*

Rod Size A	B		C		D		E		F		Max. Rec. Load				Wt. Each	
											650°F (343°C)		750°F (399°C)			
											lbs.	kN	lbs.	kN	lbs.	kg
3/8	1 1/4	(31.75)	1 1/2	(38.1)	1/2	(12.7)	2	(50.8)	1 1/16	(17.46)	730	(3.25)	572	(2.54)	.64	(.29)
1/2	1 1/4	(31.75)	1 1/2	(38.1)	1/2	(12.7)	2	(50.8)	1 1/16	(17.46)	1350	(6.01)	1057	(4.70)	.61	(.28)
5/8	1 1/4	(31.75)	1 1/2	(38.1)	1/2	(12.7)	2	(50.8)	1 1/16	(17.46)	2160	(9.61)	1692	(7.52)	.59	(.27)
3/4	1 1/4	(31.75)	1 1/2	(38.1)	1/2	(12.7)	2	(50.8)	1 1/16	(17.46)	3230	(14.37)	2530	(11.25)	.57	(.26)
7/8	1 11/16	(42.86)	2	(50.8)	3/4	(19.05)	2 5/8	(66.68)	1	(25.4)	4480	(19.93)	3508	(15.61)	1.67	(.76)
1	1 11/16	(42.86)	2	(50.8)	3/4	(19.05)	2 5/8	(66.68)	1	(25.4)	5900	(26.24)	4620	(20.55)	1.65	(.75)
1 1/8	2 1/4	(57.15)	2 1/2	(63.5)	1	(25.4)	3 3/8	(85.73)	1 1/4	(31.75)	7450	(33.14)	5834	(25.95)	3.68	(1.67)
1 1/4	2 1/4	(57.15)	2 1/2	(63.5)	1	(25.4)	3 3/8	(85.73)	1 1/4	(31.75)	9500	(42.26)	7440	(33.09)	3.57	(1.62)
1 1/2	2 1/4	(57.15)	2 1/2	(63.5)	1	(25.4)	3 3/8	(85.73)	1 1/4	(31.75)	13800	(61.39)	10807	(48.07)	3.43	(1.56)

Unless otherwise specified, all dimensions on drawings and in charts are in inches and dimensions shown in parentheses are in millimeters.